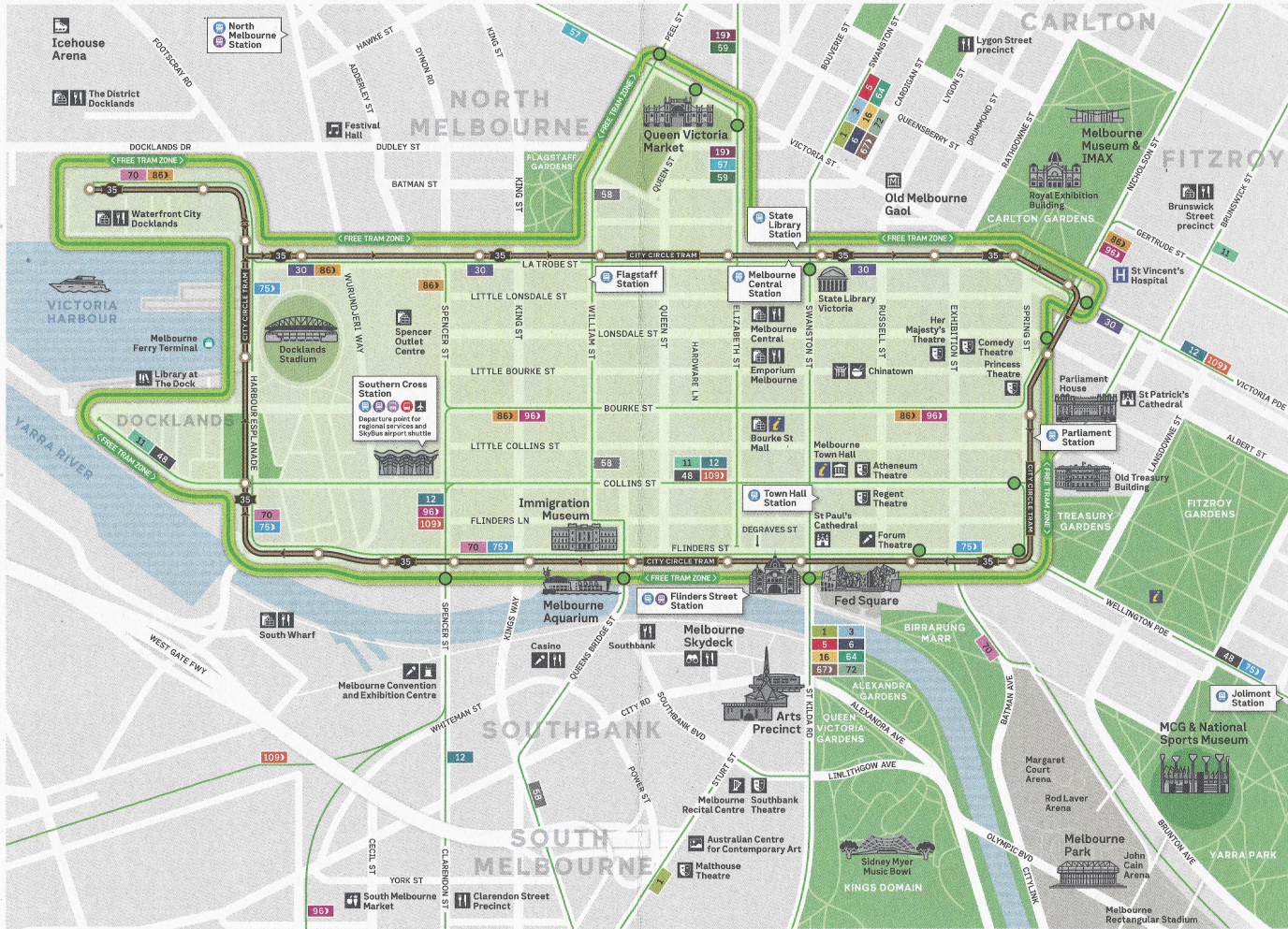


Free travel

Travelling on trams within Melbourne's city centre is free. You do not need to tap on or off if you are only travelling in the Free Tram Zone.



Ride the free historic City Circle Tram (Route 35) and learn about Melbourne, from 9.30am to 5pm daily.



Key

- Free Tram Zone boundary
- Free Tram Zone boundary stop
- Tram route
- City Circle Tram route
- City Circle Tram stop
- Visitor information hub
- Metropolitan train
- Regional train
- Regional coach
- SkyBus Airport shuttle
- Ferry

Look out for these signs at tram stops to make sure you're within the boundaries.



More information
transport.vic.gov.au

If you have a hearing or speech impairment, contact us through the National Relay Service. For more information, visit relayservice.gov.au



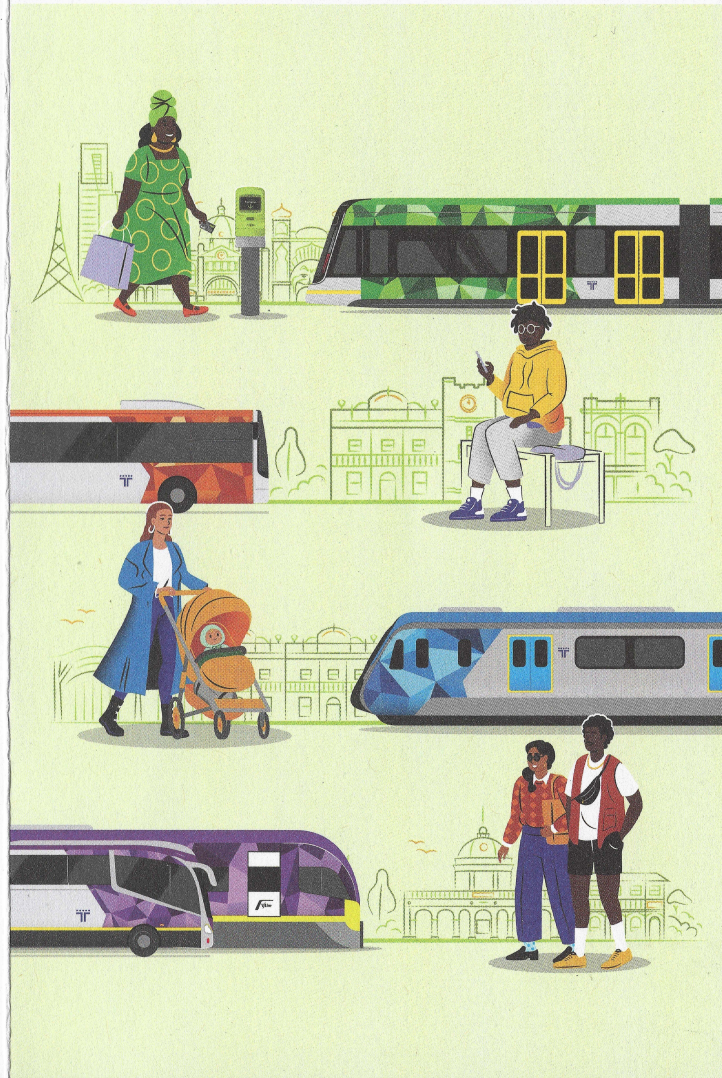
For information in other languages:

普通话	9321 5454	廣東話	9321 5441
Italiano	9321 5444	ਪੰਜਾਬੀ	9321 5445
Ελληνικά	9321 5443	हिन्दी	9321 5442
Việt-ngữ	9321 5449	සිංහල	9321 5446
عربي	9321 5440	Español	9321 5447

If your language isn't listed visit transport.vic.gov.au/languages or call 9321 5450.

Effective 1 January 2026.

How to use public transport in Victoria



Using myki to travel

myki is your ticket to travel on public transport in Victoria.

There are two types of myki – a physical card and a digital card.

Once you have your card, you will need to add money (top up) to travel.



Buying a physical card?

A full fare card is \$6.

A concession card is \$3.

A Youth myki is \$5.

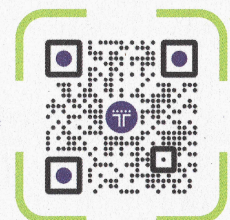
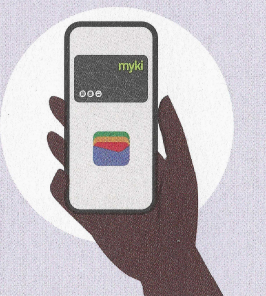
You can buy one online or in person.



Got an Android device?

Mobile myki lets you add a full fare or concession digital card to your Google Wallet for free.

Top up your myki via the Google Wallet app on your smartphone. Online top up may take up to 45 minutes.



Find out more.
Scan or visit
transport.vic.gov.au

Where to buy and top up a physical myki card

	Buy	Top up
Website	✓	✓ [†]
PTV App	✗	✓
7-Eleven and other stores with myki signs	✓	✓
myki ticket machines	✓ ^{##}	✓
myki quick top up machines	✗	✓
Train station ticket offices	✓	✓
PTV Hub at Southern Cross Station	✓	✓
Phone	✓	✓

[†] Allow 45 minutes.

^{##} Youth myki cards are not available to purchase through ticket machines.

Choose myki Money or myki Pass

myki Money lets you pay as you go. If you're travelling for 5 or more days in a week, a myki Pass could save you money.

Fares

Wherever you go in Melbourne or regional Victoria, on a train, tram, or bus*, you won't pay more than the maximum daily fare.

Daily maximum	Weekday	Weekend [#]
Full fare	\$11.40	\$8.00
Concession	\$5.70	\$4.00

Tap on at the start of every trip, except if you are only travelling in the Free Tram Zone.

To get the lowest fare on trains, buses and Zone 2 tram trips, you also need to tap off.

	Tap on	Tap off
Trains	✓	✓
Buses	✓	✓
Tram travel in Zone 1	✓	✗
Tram travel in Zone 2	✓	✓
Tram travel in Melbourne's Free Tram Zone	✗	✗

Free travel

All passengers under 18 years old travel for free on public transport, anytime, anywhere. The Youth myki card is open to anyone aged between 5 and 17 years old. Children under 5 travel free and do not need a myki card.

Victorian seniors enjoy free travel on weekends statewide, in addition to the discounts available through their current concession benefits.

Disability Support Pension recipients and carers can travel free on weekends statewide.

PTV App

With the PTV App you can:

- ✓ Top up your myki instantly
- ✓ Set and forget with auto top up for convenience
- ✓ Register your myki to protect your balance if you lose your card
- ✓ Plan and track your travel.



Download for free from the App Store or Google Play or to learn more visit transport.vic.gov.au/app



Regional travel

With the daily fare cap, you can ride any train, bus or regional coach in Victoria all day for no more than \$11.40 – even less on weekends.

myki is your ticket to travel to many parts of regional Victoria, including Ballarat, Bendigo, Geelong, Gippsland and Seymour.

When do I need a different ticket type?

Journeys that include travel outside myki zones require an eTicket or paper ticket.

* Excludes SkyBus Airport service and journeys that start or end outside Victoria.

Weekends and public holidays.